

# SHELL BEACH PROTECTED AREA AND SEA TURTLE CONSERVATION IN GUYANA

CONSERVATION AND MANAGEMENT

**PRESENTER: SOPHEIA EDGHILL**

2018 WIDECAST ANNUAL MEETING  
MATURA, TRINIDAD





# Shell Beach Protected Area

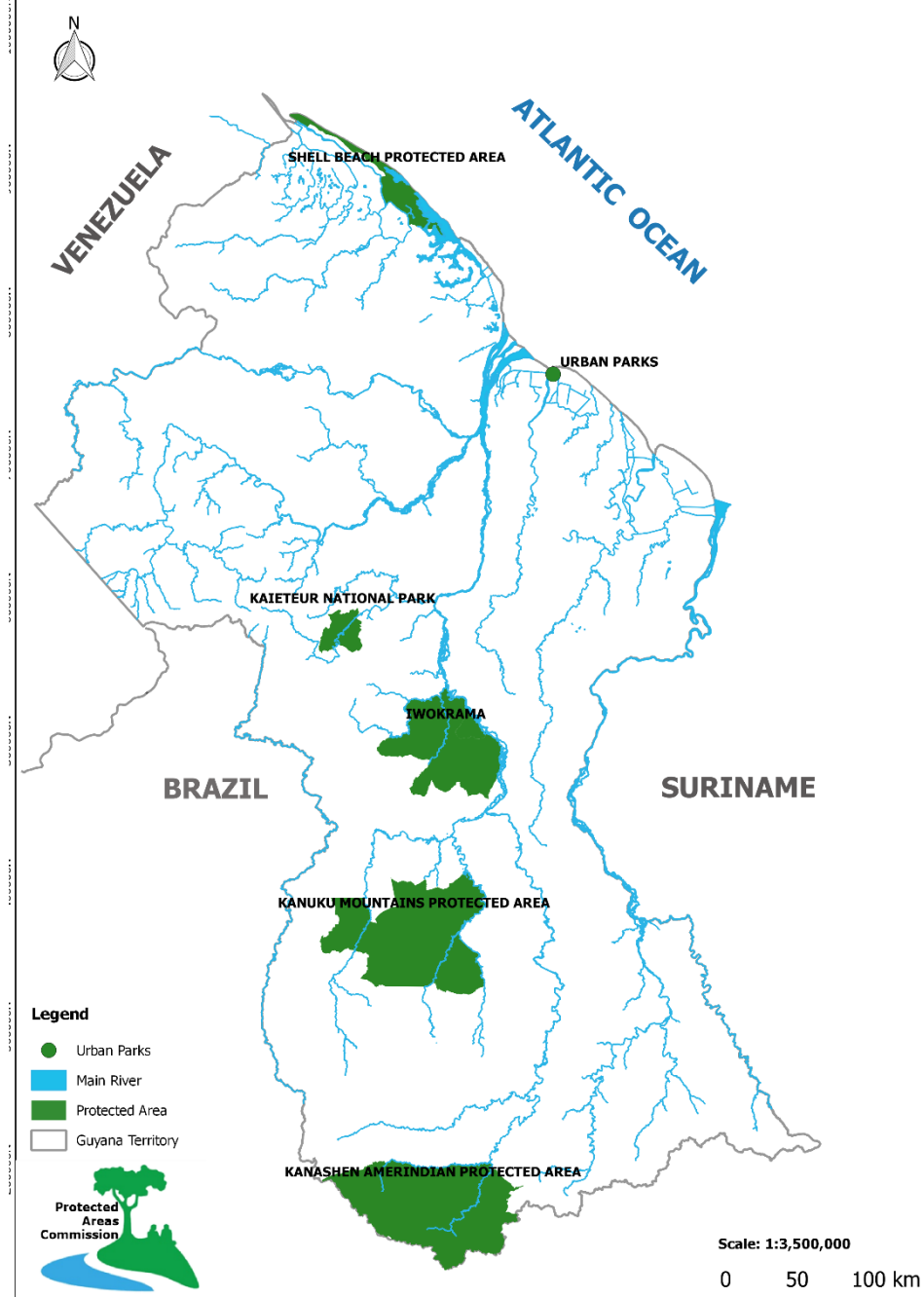
❖ Established in 2011

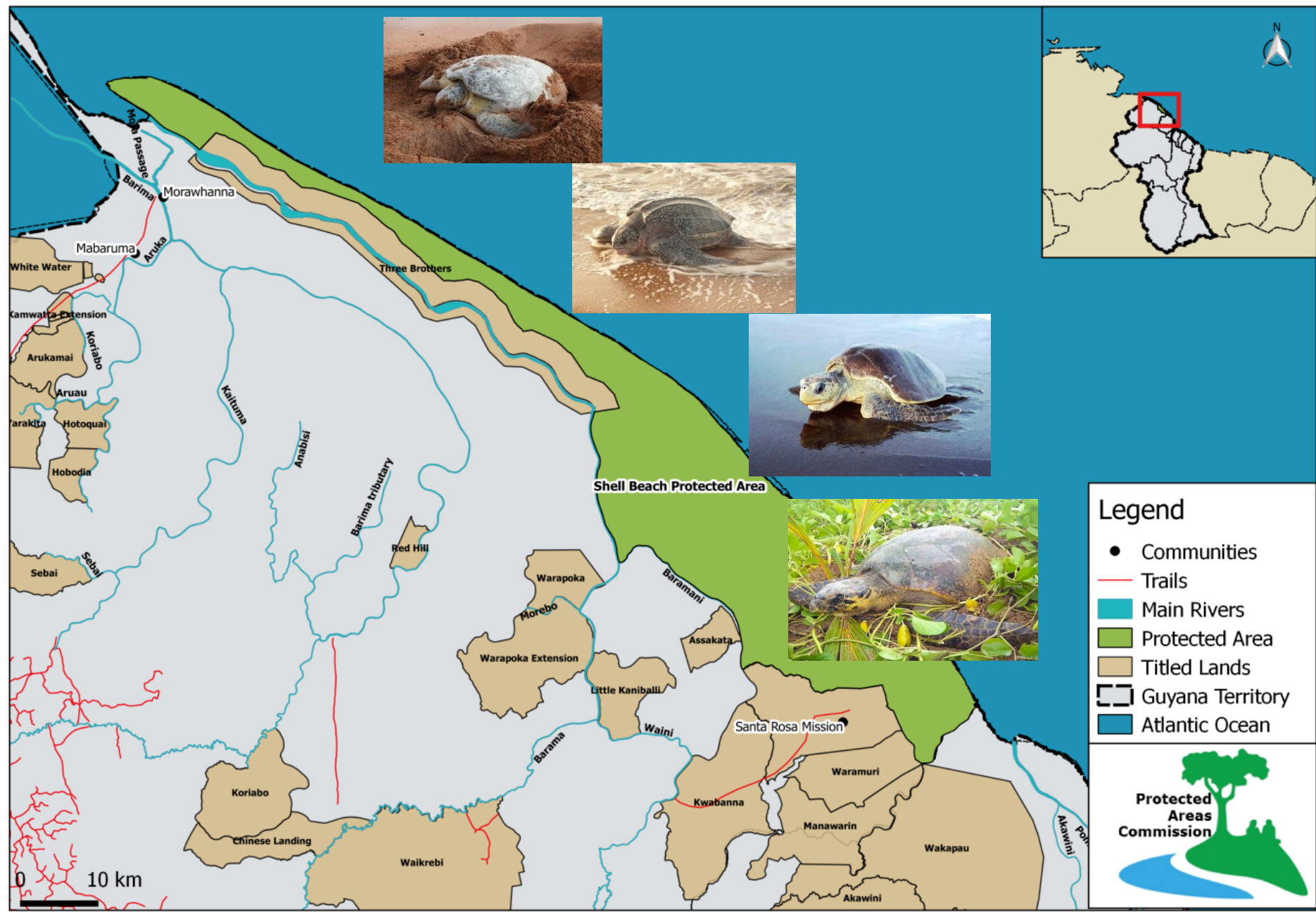
❖ North Western Coast

❖ Neighbouring Venezuela

❖ Over 120 kilometers of beach and mudflats

❖ Largest extent of unspoiled mangroves









Legally protected against harm and exploitation

# LEGISLATION, REGULATIONS



- ❖ The Protected Areas Act, 2011
- ❖ Wildlife Management and Conservation Regulations 2013
- ❖ Fisheries Act 2002
- ❖ Maritime Zones Act No.18 of 2010





# MANAGEMENT



## Sea Turtle Conservation and Monitoring Plan 2016-2020

SHELL BEACH PROTECTED AREA, REGION 1, GUYANA  
VERSION 1

### Shell Beach Protected Area Management Plan

2015 – 2019

Volume 1, FINAL – DECEMBER 15, 2014



Protected Areas Commission  
NATIONAL PARK, THOMAS LANDS, GEORGETOWN, GUYANA





# SEA TURTLE CONSERVATION AND MONITORING



- ❖ Nesting turtles
- ❖ Hatchling success
- ❖ Returned & Remigrants





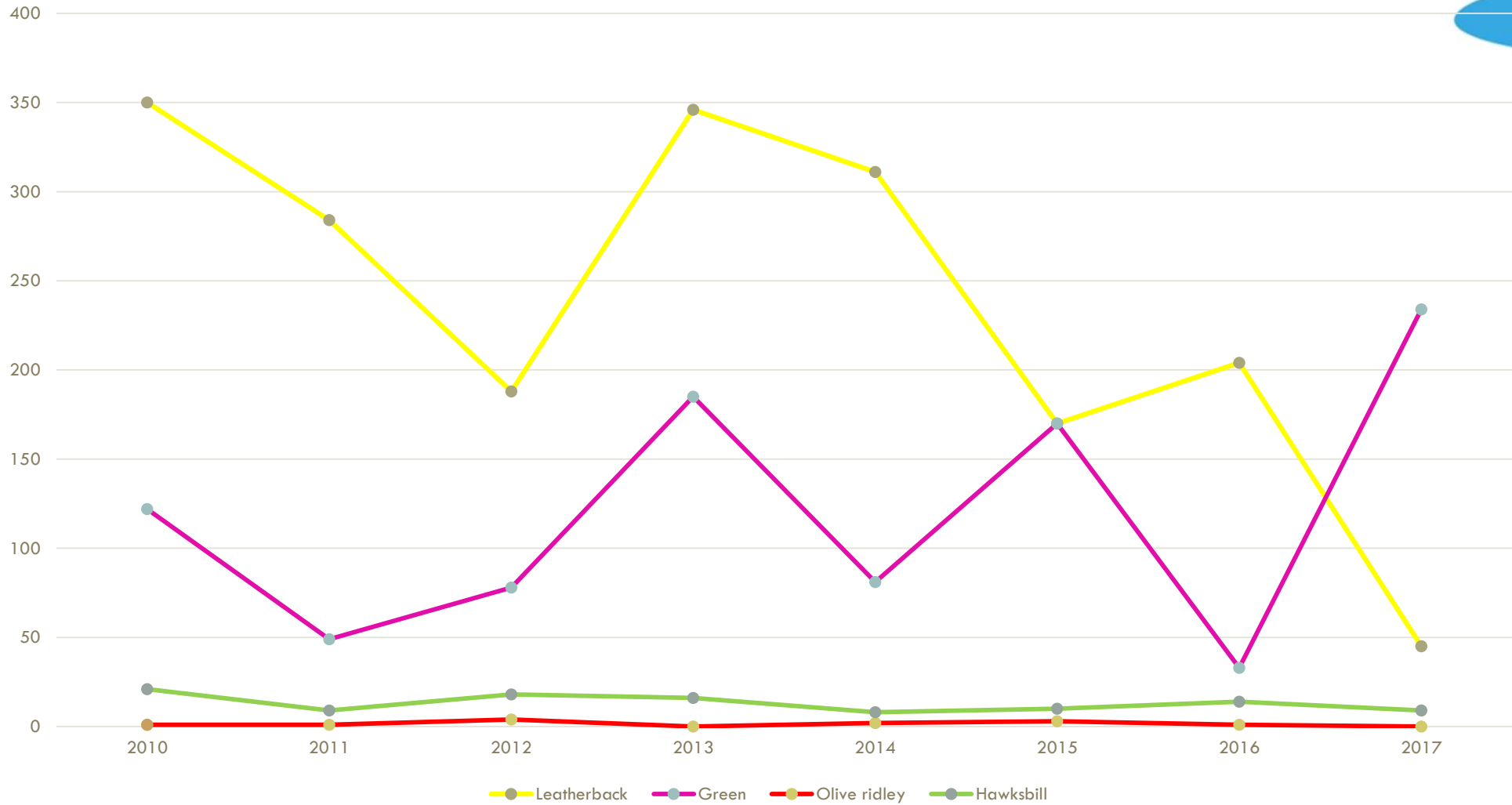
# GMTCS SEA TURTLE NESTING DATA 2010 TO 2015



Year	Leatherback	Green	Olive ridley	Hawksbill	Total	Beaches Monitored
2010	350	122	1	21	494	Almond, Annette
2011	284	49	1	9	343	Almond
2012	188	78	4	18	288	Almond
2013	346	185	0	16	547	Almond
2014	311	81	2	8	402	Almond
2015	170	170	3	10	353	Almond
<b>Total</b>	<b>1,649</b>	<b>685</b>	<b>11</b>	<b>82</b>	<b>2,427</b>	



# NESTING TRENDS FROM 2010- 2017







# MONITORING OF THREATS



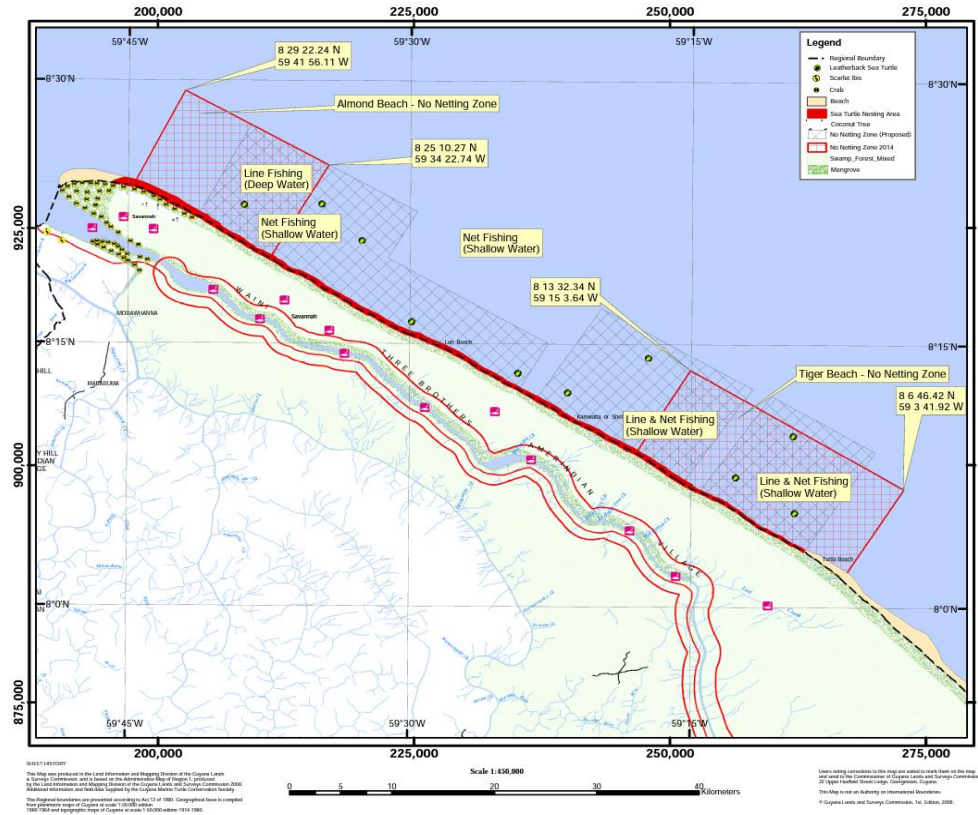
- ❖ By 2020, bycatch of marine turtles is reduced in selected fisheries in Region 1 by 50% compared to 2016.
- ❖ By 2020, predation of marine turtle nests by dogs reduced by 90% compared to 2015.
- ❖ By 2020, less than 10% of nests laid and less than 2% of the nesting females are poached on nesting beaches.
- ❖ By 2020, livelihoods and Benefits of people living in SBPA communities are improved through sustainable activities linked to marine turtle conservation and SBPA management.
- ❖ By 2020, threats from beach erosion, mudflats, climate change, and offshore petroleum exploration activities are monitored, assessed, and understood within the SBPA and any new nesting beaches



# By 2020, bycatch of marine turtles is reduced in selected fisheries in Reaion 1 by 50% compared to 2016.



- ❖ NNZ awareness
- ❖ 2016 and 2017 baseline survey of by-catch
- ❖ Engaging with the Fisheries Department inclusion on NNZ in licences



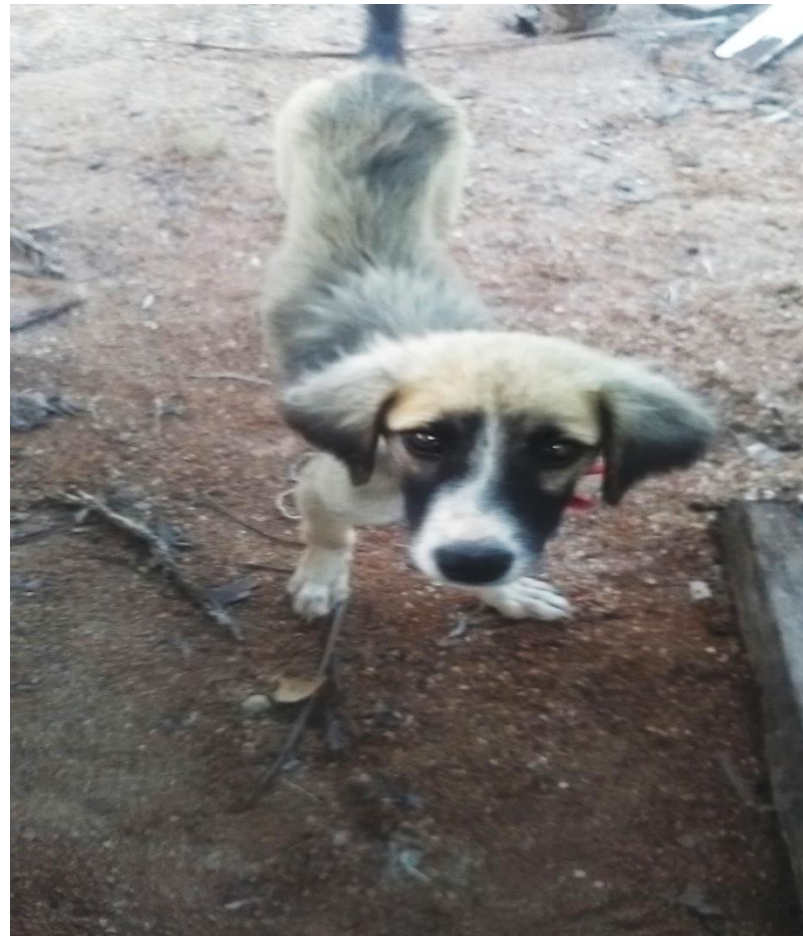




## By 2020, predation of sea turtle nests by dogs is reduced by 90% compared to 2015



- ❖ Limit two per family
- ❖ One-time buy-out
- ❖ Neuter and spay
- ❖ Pilot - use fence mesh to protect nests







By 2020, less than 10% of nests laid and less than 2% of the nesting females are poached on nesting beaches.



- ❖ Monitoring of beaches
- ❖ Liaise with other law enforcement agencies to monitor coastline & communities
- ❖ Issuance of notices to offenders
- ❖ Engaging with local communities/ national stakeholders

### Shell Beach Protected Area

This beach is part of Shell Beach Protected Area. Sea turtles use this beach annually for nesting from February to August. **Sea turtles are protected by law in Guyana.**

All visitors on the beach are required to follow the rules and guidelines noted below and instructions of the rangers during the sea turtle nesting season.

Wear dark clothes	Keep 2 meters distance	Guide required	Use red light	Maximum group size of 6
Stay quiet	No campfire	No flash	Do not help hatchlings to the sea	Do not take anything from the beach
Do not obstruct arriving or departing turtles	Do not touch the turtle	Do not litter	Do not take or consume turtle eggs	Do not trample turtle nests

Sea turtles that nest here:

- Leatherback
- Green
- Olive Ridley
- Hawksbill

For any matters concerning Shell Beach Protected Areas, you can contact a ranger on the beach or the office at:  
Protected Areas Commission  
National Park, Thomas Lands  
Georgetown  
+992-227-1888





By 2020, livelihoods and Benefits of people living in SBPA communities are improved through sustainable activities linked to marine turtle conservation and SBPA management.



- ❖ Recruiting and training rangers from local communities
- ❖ Identification of community livelihood needs
- ❖ Potential development of a low-impact tourism







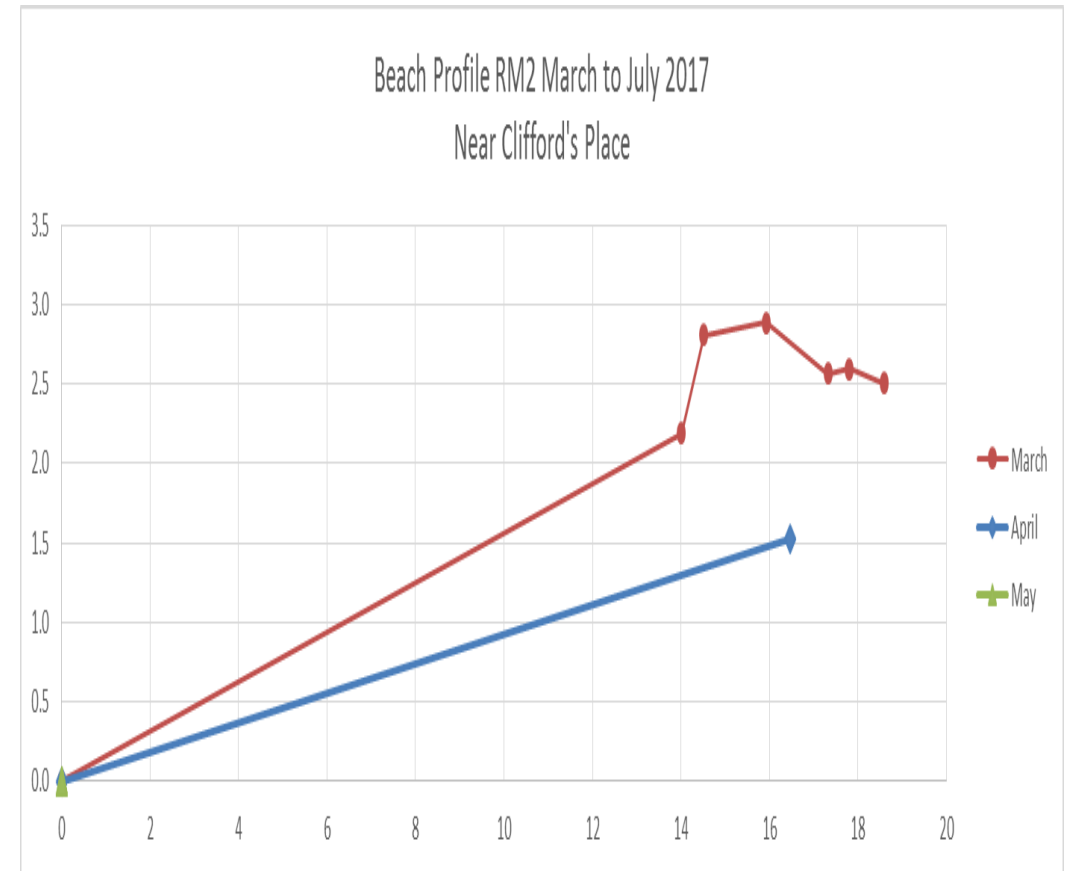
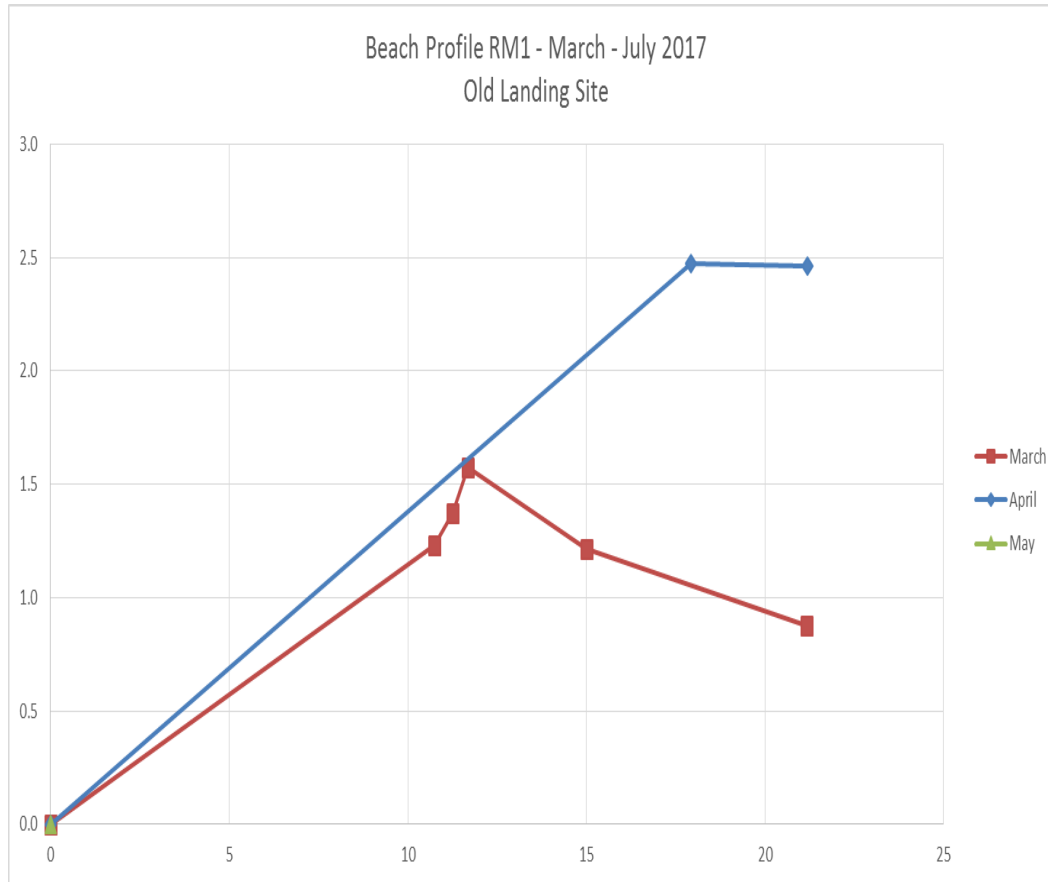
By 2020, threats from beach erosion, mudflats, climate change, and offshore petroleum exploration activities are monitored, assessed, and understood within the SBPA and any new nesting beaches



- ❖ Understanding the impacts of climate change from current and future research
- ❖ Working with offshore exploration companies to understand and develop emergency and contingency plans
- ❖ Continuous monitoring of primary and secondary beaches for suitability

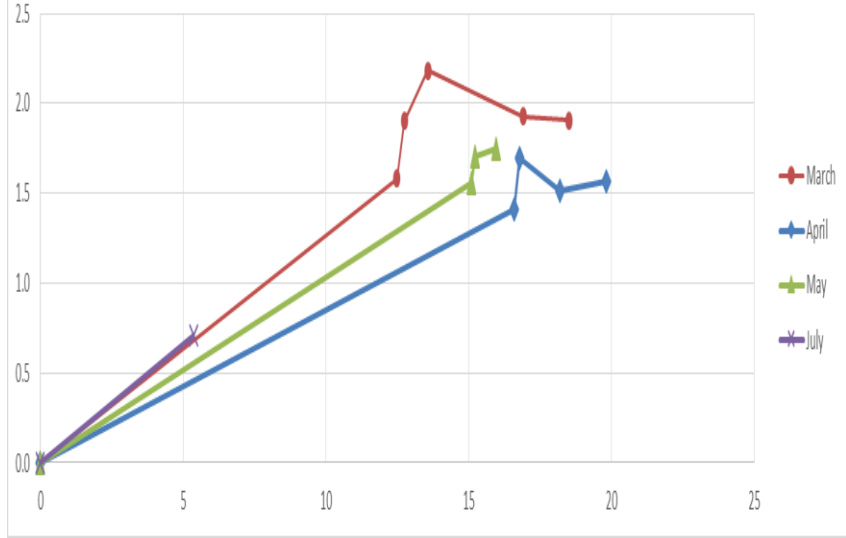




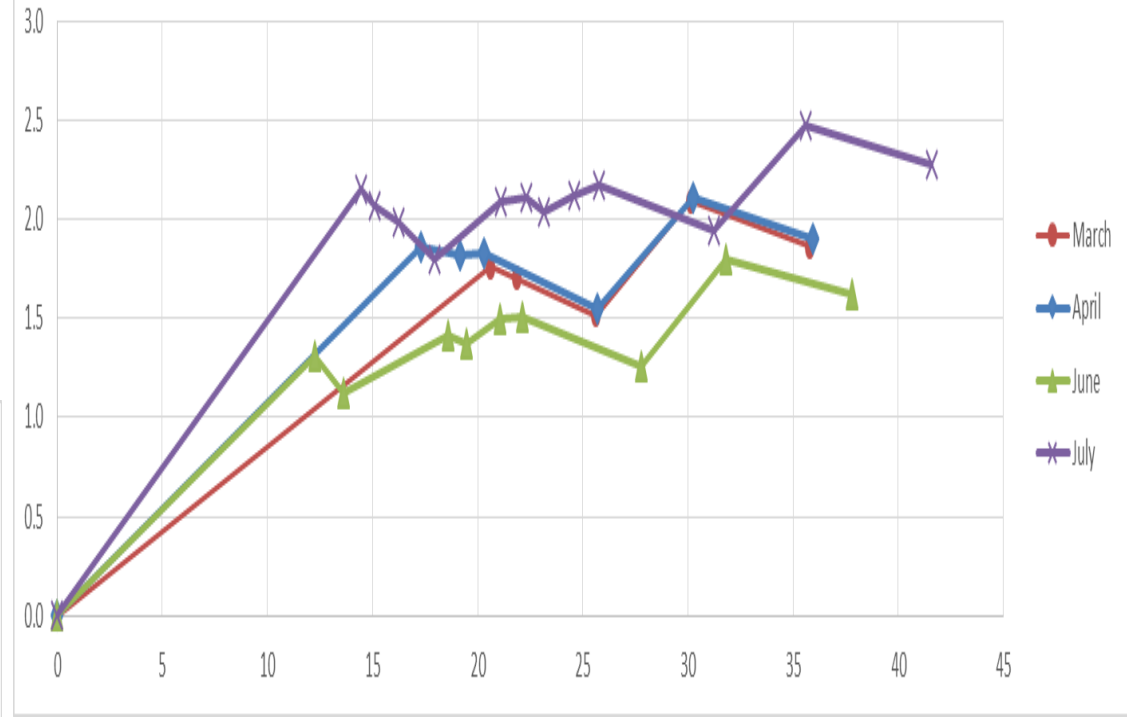




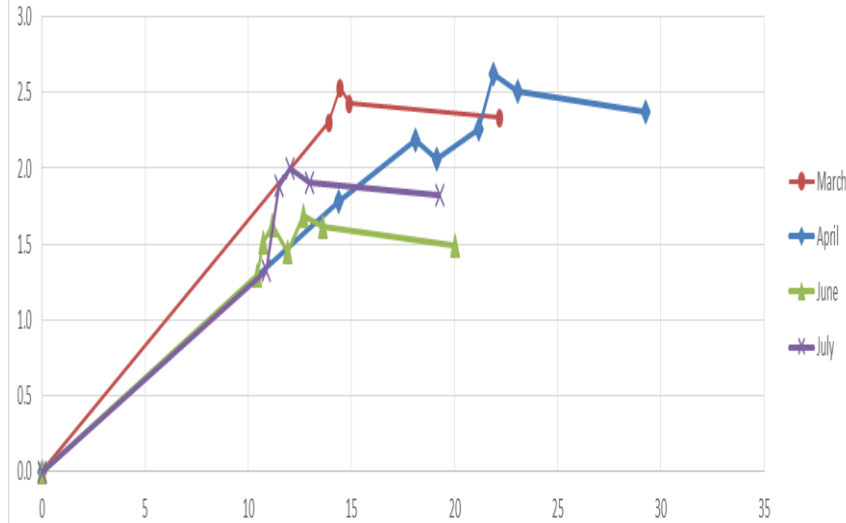
Beach Profile RM3 - March to July 2017  
Near Arnold's Place



Beach Profile RM5 - March to July 2017  
Near George's Place

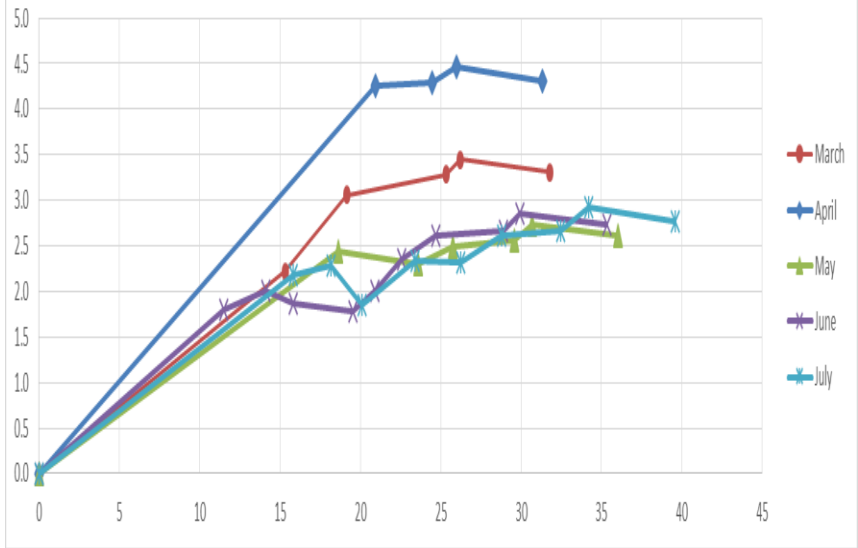


Beach Profile RM4 - March to July 2017  
East of George's Place

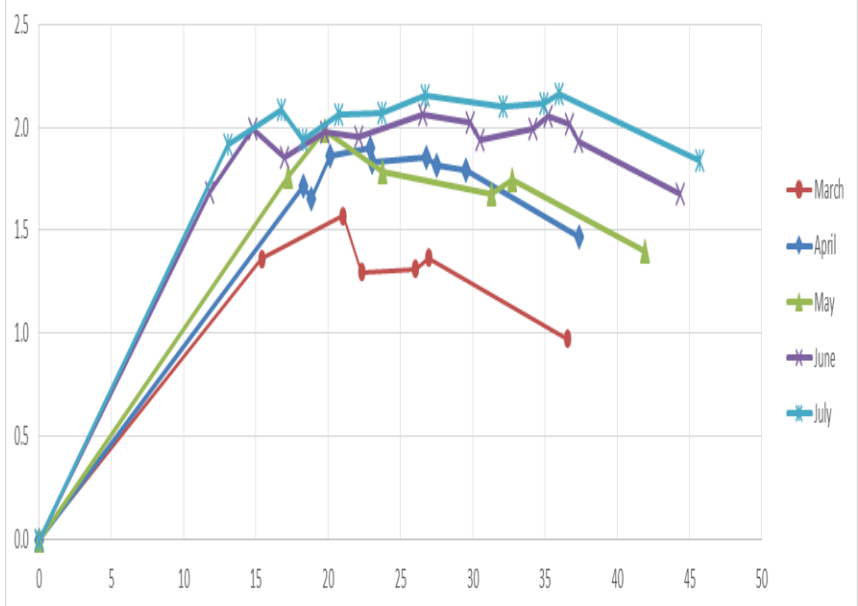




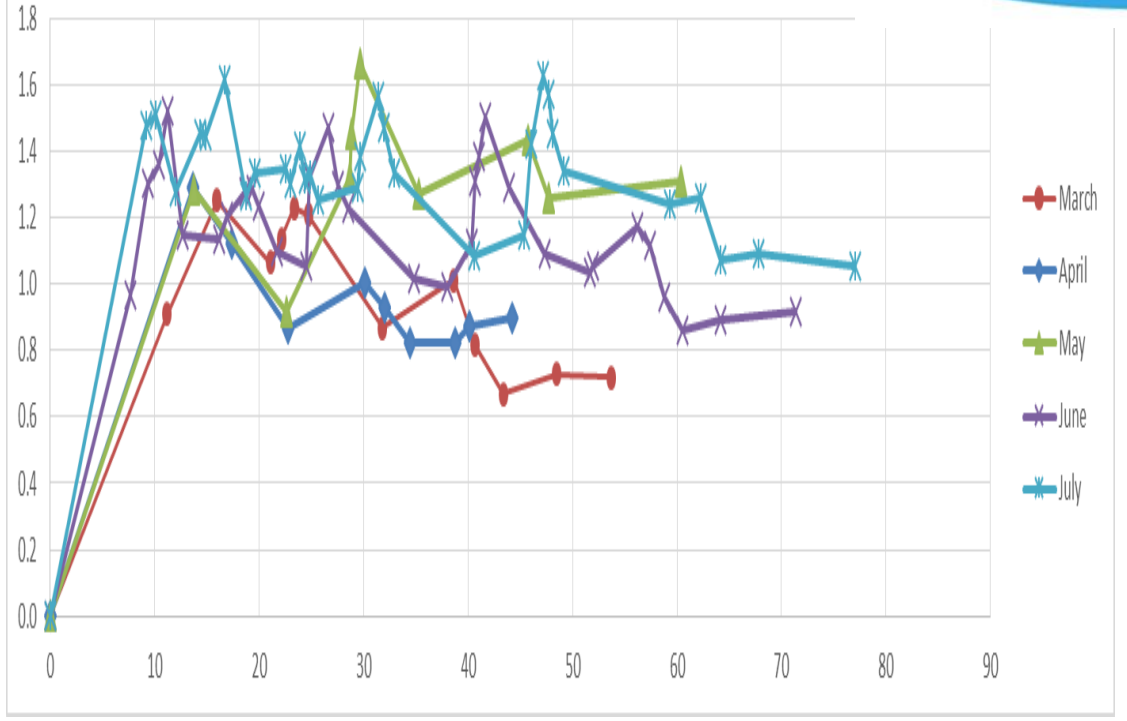
Beach Profile RM6 - March to July 2017  
Near Wilson's Place



Beach Profile RM7 - March to July 2017



Beach Profile RM8 - March to July 2017  
West End of Monitoring Beach







**Thank You !**